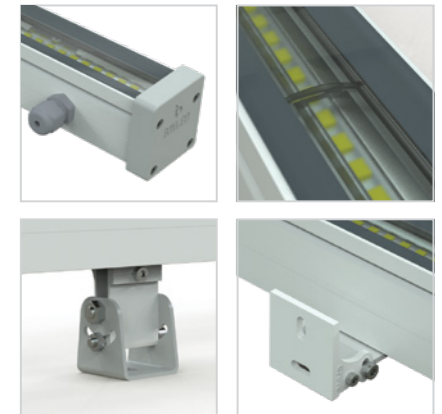
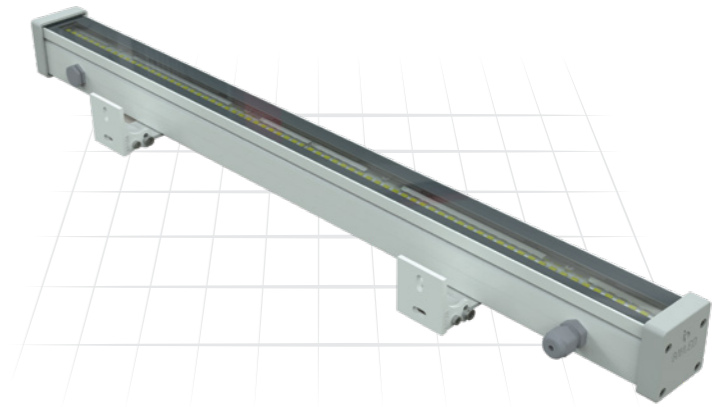
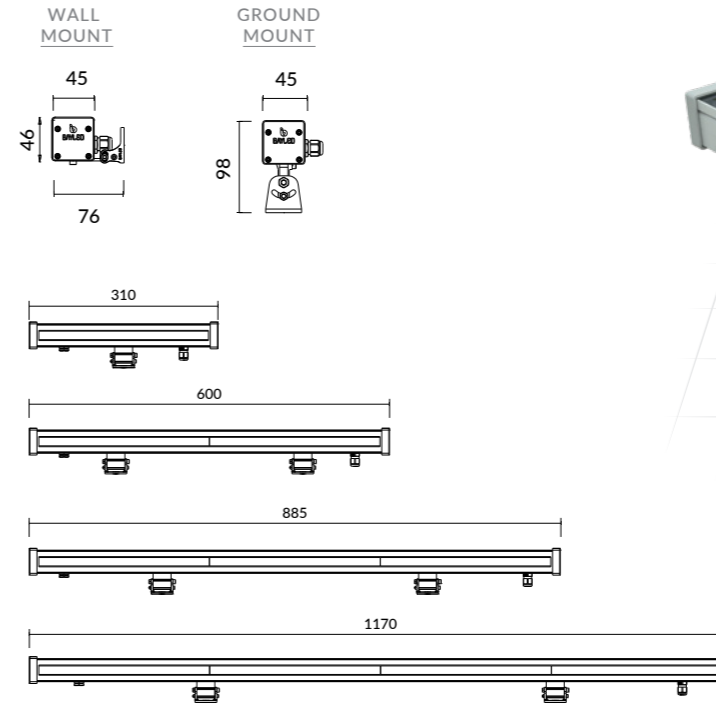


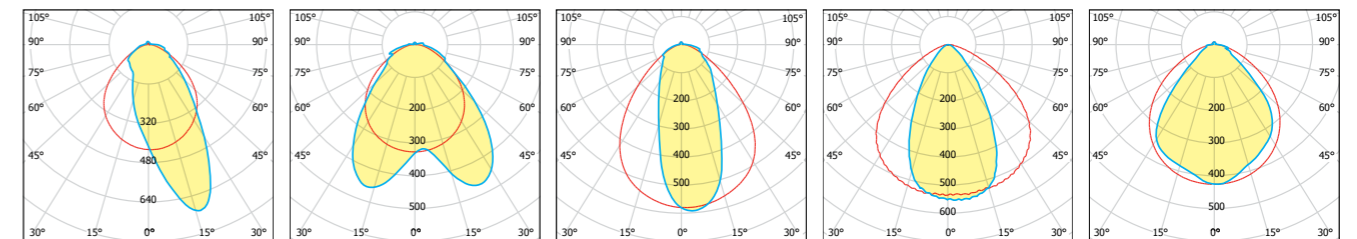


ARSEN DC (24V)

EN 60598 | IP66 | CE



Photometric Curves



Purchase Order Table

CODE	MODULE POWER	LUMINAIRE POWER	MODULE LUMINOUS FLUX	LUMINAIRE LUMINOUS FLUX	COLOR TEMPERATURE
01-08-30-6-XX-X	6W	7W	1014lm-1071lm	933lm-991lm	3000K - 4000K
01-08-60-12-XX-X	12W	13W	1951lm-2070lm	1795lm-1905lm	3000K - 4000K
01-08-90-18-XX-X	18W	20W	2792lm-2963lm	2569lm-2726lm	3000K - 4000K
01-08-120-24-XX-X	24W	26W	4197lm-4458lm	3861lm-4102lm	3000K - 4000K

XX : Lens Angle, X : Led Color
Standard colour temperature 4000K, also available with 6500K on request.

Technical Specifications

Wallwasher made of aluminium extrusion,	DALI controllable (optional)
Clear 5mm safety glass	0-10V / 1-10V controllable (optional)
Silicon rubber gasket	Safety class I
Swivel range 30°	Protection class IP66
Mounting bracket made of plastic.	Operation temperature -25°C / +55°C
Lens angle 18°- 25°- 30°x90°- 60°x110°- 90°x110°	Wind catching area: 0,02m ²
Colour standard mat anodized,	Weight: 31cm: 0,5kg / 60cm: 1kg / 88,5cm: 1,5kg / 117cm: 2kg
Input 24V DC 50 / 60 Hz	Complies with European standards
Power factor > 90% full load	EN 60598 and CE certificate
Mono Colour (Standard)	

CCT tolerance within a 3 step MacAdams ellipse and LM80 compliant

Lifetime 50.000 working hours at least



For updated information about product lighting specifications please visit: www.bayled.eu

