

EXEGI-2 65 70W



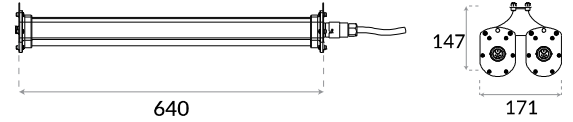
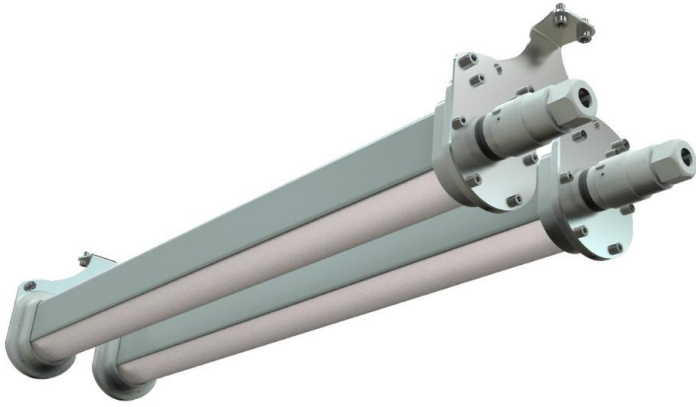
HIGH-LOW BAY LINEAR

IP66

IK10



EN60598 CE



PRODUCT DATA

General Information

| | |
|----------------------------|---|
| Number of light source | 192 pcs |
| LED module | Mid Power LED's on alu-PCB |
| Light distribution | 120°(without lens) |
| Light source colour | 6500K |
| Number of gear unit | 1 unit |
| Driver / power unit | PS (Constant current) |
| Driver included | Yes |
| Optical cover / lens type | Diffuser |
| Control interface | On/Off |
| Connection | - |
| Cable | 3x1,5 mm ² |
| Protection class IEC | Safety class I |
| CE mark | CE mark |
| ENEC mark | - |
| Warranty period | 5 years |
| Optic type | Symmetric |
| EU RoHS compliant | Yes |
| Light source engine type | LED |
| LDT / IES photometric file | Available |
| Life span | Estimated average 50.000 hours |
| MacAdams | CCT tolerance within a 3 step MacAdams ellipse |
| Product code | 90-02-65-70-192-X (XX: Lens angle, X: Led colour) |

Operating and Electrical

| | |
|---------------------|--------------|
| Input Voltage | 198-264 V AC |
| Input frequency | 50 to 60 Hz |
| Inrush current | 318 mA |
| Power factor (min.) | 0.92 |

Control and Dimming

| | |
|--------------------|--------------|
| Dimmable(optional) | 1-10V - DALI |
| DMX | - |

Mechanical and Housing

| | |
|-------------------------------------|--|
| Housing material | Plastic |
| Gasket | Silicone |
| Optic material | - |
| Optical cover / lens material | PMMA |
| Fixation material | Plastic and stainless steel mounting bracket |
| Mounting device | - |
| Effective projected area | 0,11m ² |
| Colour | Grey |
| Dimensions (height x width x depth) | 171 x 640 x 147 mm |

Approval and Application

| | |
|--|----------|
| Ingress protection code | IP66 |
| Mech. impact protection code | IK10 |
| Surge protection (common/differential) | 2 KV/1KV |

Initial Performance (IEC Compliant)

| | |
|--------------------------|---|
| Module luminous flux | 11264 lm (6500K) |
| Luminaire luminous flux | 9462 lm (6500K) |
| LED luminaire efficiency | 135 lm (6500K) |
| Colour Temperature | 6500K |
| | 4000K / 3000K also available up on request. |
| Colour rendering index | >70 |
| Rated LED power | 64W |
| Rated luminaire power | 70W |

Application Conditions

| | |
|---------------------------|----------------|
| Ambient temperature range | -25°C to +55°C |
| Maximum dimming level | - |
| Net weight (piece) | 2,79 kg |

Fixture Run Length

To calculate fixture run lengths and total power consumption for your specific installation, please ask to company assistant

BAYLED TEKNOLOJİ A.Ş.

Ahi Evran Mah. 225. Cad. No:84 06935, Sincan ANKARA / TURKEY
T: +90 312 395 76 35 | F: +90 312 395 73 65 | sales@bayled.com.tr

Bayled is a Baytaş group brand.

Scan the QR Code to go to the product web page.



We reserve the right to change specifications without prior written notice.

Current version under: www.bayled.eu