

EXEGI WALL 35 12W



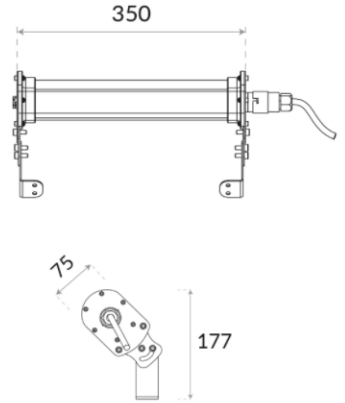
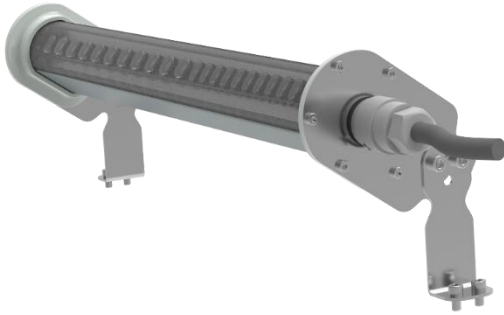
WALLWASHER

IP66

IK10



EN60598 CE



PRODUCT DATA

General Information

Number of light source	12 pcs
LED module	Mid Power LED's on alu-PCB
Light distribution	17°- 25° - 35° - 45°x20°
Light source colour	3000K-4000K
Number of gear unit	1 unit
Driver / power unit	PS (Constant current)
Driver included	Yes
Optical cover / lens type	Multi lens
Control interface	On/Off
Connection	-
Cable	3x1,5 mm ²
Protection class IEC	Safety class I
CE mark	CE mark
ENEC mark	-
Warranty period	5 years
Optic type	Symmetric - asymmetric
EU RoHS compliant	Yes
Light source engine type	LED
LDT / IES photometric file	Available
Life span	Estimated average 50.000 hours
MacAdams	CCT tolerance within a 3 step MacAdams ellipse
Product code	90-01-35-12-12-XX-X (XX: Lens angle, X: Led colour)

Operating and Electrical

Input Voltage	198-264 V AC
Input frequency	50 to 60 Hz
Inrush current	55 mA
Power factor (min.)	0.92

Control and Dimming

Dimmable(optional)	1-10V - DALI
DMX	-

Mechanical and Housing

Housing material	Plastic
Gasket	Silicone
Optic material	PMMA
Optical cover / lens material	Diffuser / PMMA
Fixation material	Plastic and stainless steel mounting bracket
Mounting device	-
Effective projected area	0,04m ²
Colour	Grey
Dimensions (height x width x depth)	107 x 350 x 75 mm

Approval and Application

Ingress protection code	IP66
Mech. impact protection code	IK10
Surge protection (common/differential)	2 KV/1KV

Initial Performance (IEC Compliant)

Module luminous flux	1815 lm (4000K) / 1725 lm (3000K)
Luminaire luminous flux	1706 lm (4000K) / 1621 lm (3000K)
LED luminaire efficiency	142 lm (4000K) / 135 lm (3000K)
Colour Temperature	4000K / 3000K
	6500K also available up on request.
Colour rendering index	>70
Rated LED power	11W
Rated luminaire power	12W

Application Conditions

Ambient temperature range	-25°C to +55°C
Maximum dimming level	-
Net weight (piece)	0,8 kg

Fixture Run Length

To calculate fixture run lengths and total power consumption for your specific installation, please ask to company assistant

BAYLED TEKNOLOJİ A.Ş.

Ahi Evran Mah. 225. Cad. No:84 06935, Sincan ANKARA / TURKEY
T: +90 312 395 76 35 | F: +90 312 395 73 65 | sales@bayled.com.tr

Bayled is a Baytaş group brand.

Scan the
QR Code
to go to
the product
web page.



We reserve the right to change specifications without prior written notice.

Current version under: www.bayled.eu