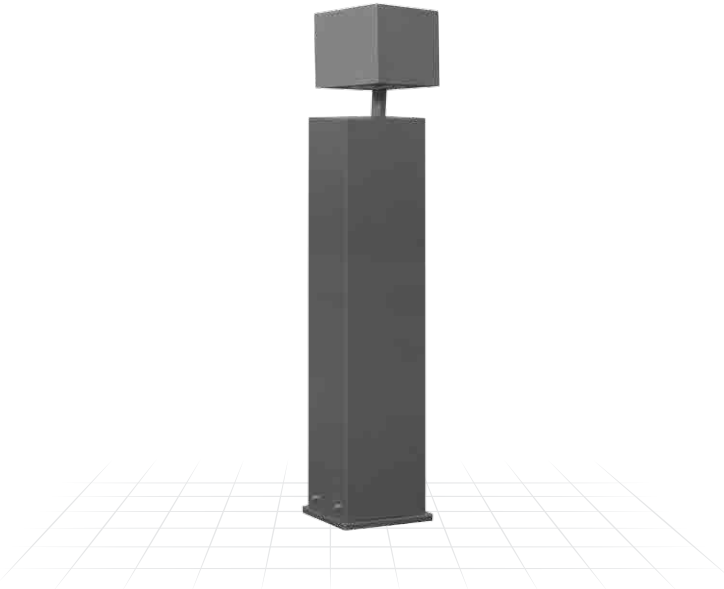
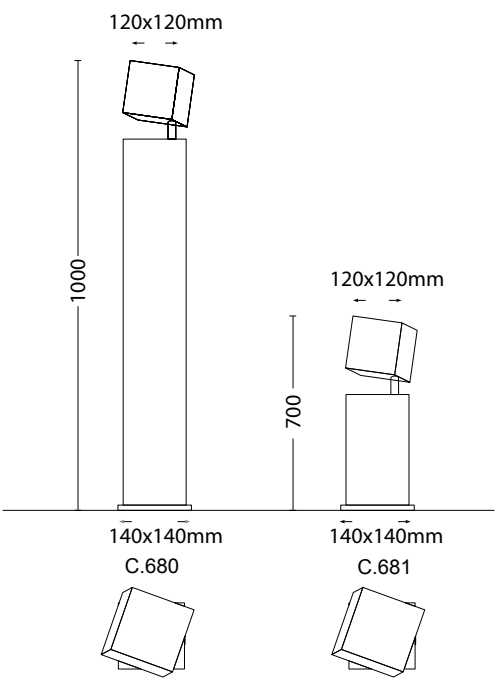




RIBA

EN 60598 | IP54 | CE



Purchase Order Table

| CODE | MODULE POWER | LUMINAIRE POWER | LUMINAIRE LUMINOUS FLUX | COLOR TEMPERATURE |
|------------|--------------|-----------------|-------------------------|-------------------|
| 60-77-20-X | 20W | 22W | 1640lm - 1800lm | 3000K-4000K |

X : Led Color

Technical Specifications

| | |
|--|-------------------------------------|
| Body Pole, Aluminium Profile - Standard | Led Driver, 350mA |
| Luminary Part, Manufactured from all aluminium | Power Consumption, Max 20W |
| Protection Class, IP 54 | Cable , 3*1 TTR Non-flammable cable |
| Insulation Class II | Operating Temperature, -20°C + 55°C |
| Mounting Detail, Anchor System | Led Module 12 |
| Paint, All RAL codes or Special architectural paints | Colour Temperature, 3000K / 4000K |
| Luminary Dimensions, 120x120mm | CRI, 3000K>80 / 4000K >70 |
| Total Height, 700-1000mm | |

CCT tolerance within a 3 step MacAdams ellipse and LM80 compliant

Lifetime 50.000 working hours at least



For updated information about product lighting specifications please visit: www.bayled.eu

